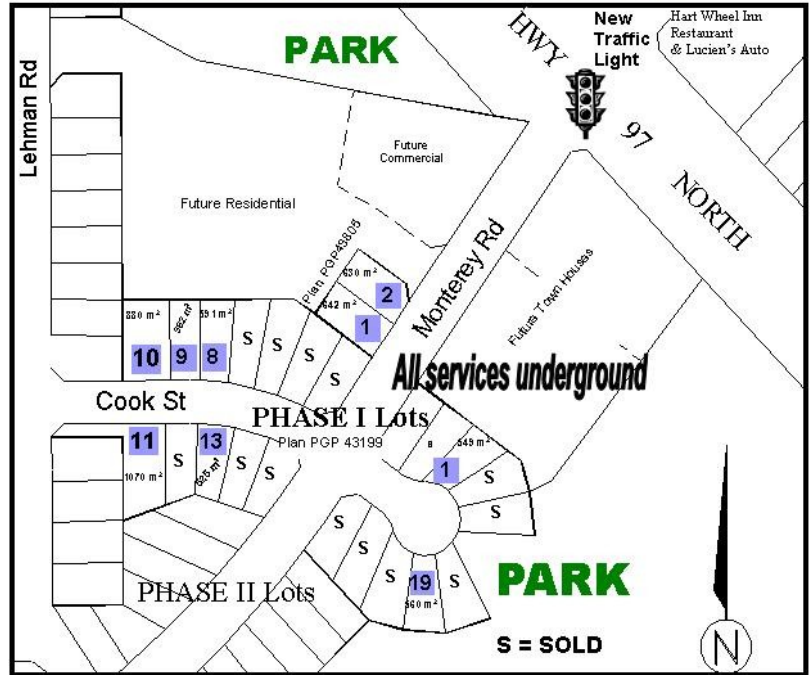
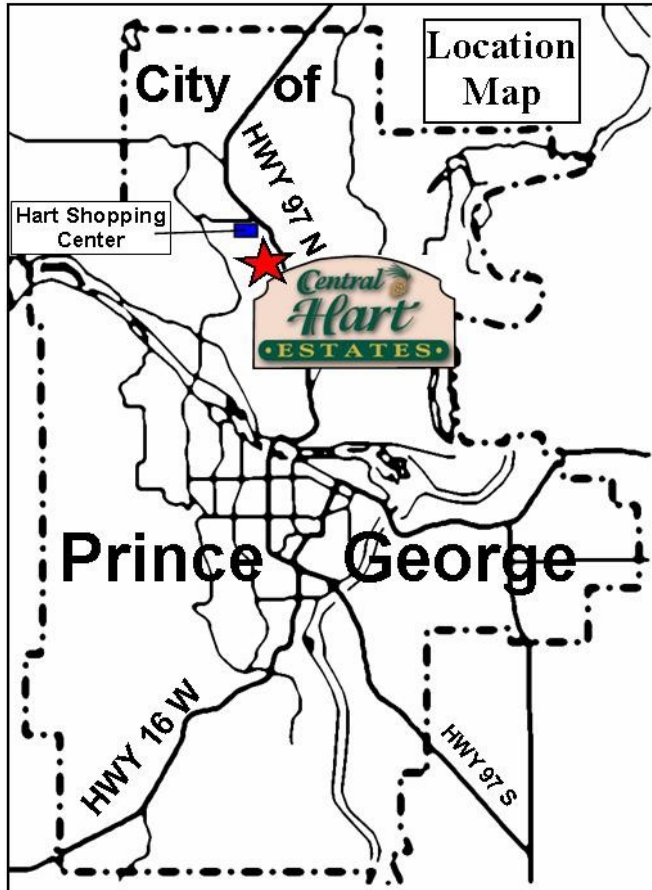


Phase I

Prime Residential/Modular Home Lots at a Great Value.



Home is where the Hart is!



Phase I Lots for Sale

Lot	Plan	Area	Price	Street
1	PGP43805	642m ² (6907 ft ²)	\$69,900	Monterey Rd
Sale Pending 2	PGP43805	635m ² (6832 ft ²)	\$69,900	Monterey Rd
8	PGP43199	591m ² (6359 ft ²)	\$68,800	Cook St
9	PGP43199	562m ² (6047ft ²)	\$69,900	Cook St
10	PGP43199	880m ² (9468 ft ²)	\$72,600	Cook St
11	PGP43199	1070m ² (11,513 ft ²)	\$71,900	Cook St
13	PGP43199	525m ² (5649ft ²)	\$67,500	Cook St
19	PGP43199	560m ² (6025 ft ²)	\$69,500	Cook Pl
1	PGP43199	549m ² (5907 ft ²)	\$69,300	Cook Pl

- ◆ Prices subject to change without notice
- ◆ Price does not include GST (Home owners are eligible for a 36% rebate on GST)
- ◆ For Houses or Newer Modulares
- ◆ Terms Available- Call for details



MATTE BROS.

www.mattebros.com

For More Information Contact:

ELDON MATTE Cell: (250) 565-8503
 TELEPHONE (250) 563-0611
 FAX (250) 563-0929
 813 VICTORIA STREET
 PRINCE GEORGE, B.C.
 V2L 2K7